



# Kerrs Creek Wind Farm

Community information sessions  
31 Jul & 1 Aug 2024



**POWER  
FOR  
GOOD**





RES acknowledges the Traditional Custodians of Country throughout Australia and their ongoing connections to land, sea and community.

We pay our respects to the Wiradjuri people and their Elders past and present and extend that respect to all Aboriginal and Torres Strait Islander peoples.

# Agenda

5:00	Welcome & meet the project team Session purpose & ground rules	5 mins	Kallista Puarr
5:05	Project updates	10 mins	Mark Roberts
5:15	Visual impact assessment	5 mins	Ashley Robertson
5:20	Landowner perspective	5 mins	Susan Findlay Tickner
5:25	Q&As	30 mins	Kallista Puarr
5:55	Close & next steps	5 min	Kallista Puarr

# Meet the Project Team



## RES - developer

- » Greg Wilkinson, Director of Development
- » Kallista Puarr, Lead Development Project Manager & **Session Facilitator**
- » Mark Roberts, Senior Development Project Manager
- » Ava Powell-Larwood, Development Project Manager
- » Kim Stone, Community Engagement Advisor
- » Mike Head, Environment Manager
- » Susan Findlay Tickner, Landowner Murra Warra Wind Farm & Projects Communications Manager
- » Rhys Adcock, Development Project Manager

## Moir – visual consultant

- » Ashley Robertson, Senior Associate

# Session purpose

- ④ Update you on project changes.
- ④ We value your time, feedback & input.
- ④ No decisions will be made today.
- ④ Please hold questions during the presentation until the Q&A.
- ④ Media enquiries: Greg Wilkinson or email: [Media.Enquiries@RES-GROUP.COM](mailto:Media.Enquiries@RES-GROUP.COM)
- ④ No recording of the session or quoting presenters is permitted.
- ④ All posters, slides and a summary of sessions will be uploaded to the project website next week.



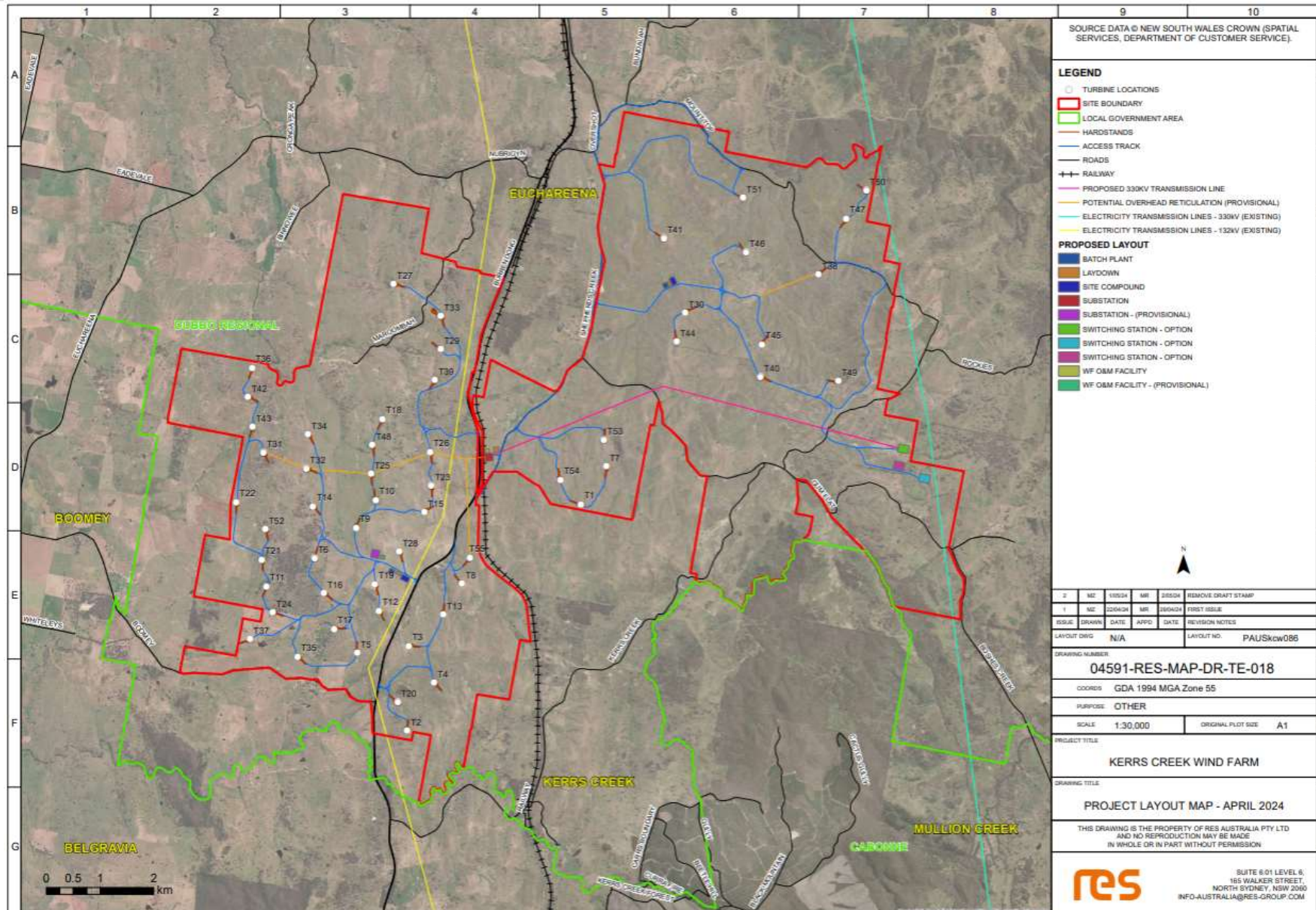
# Project update

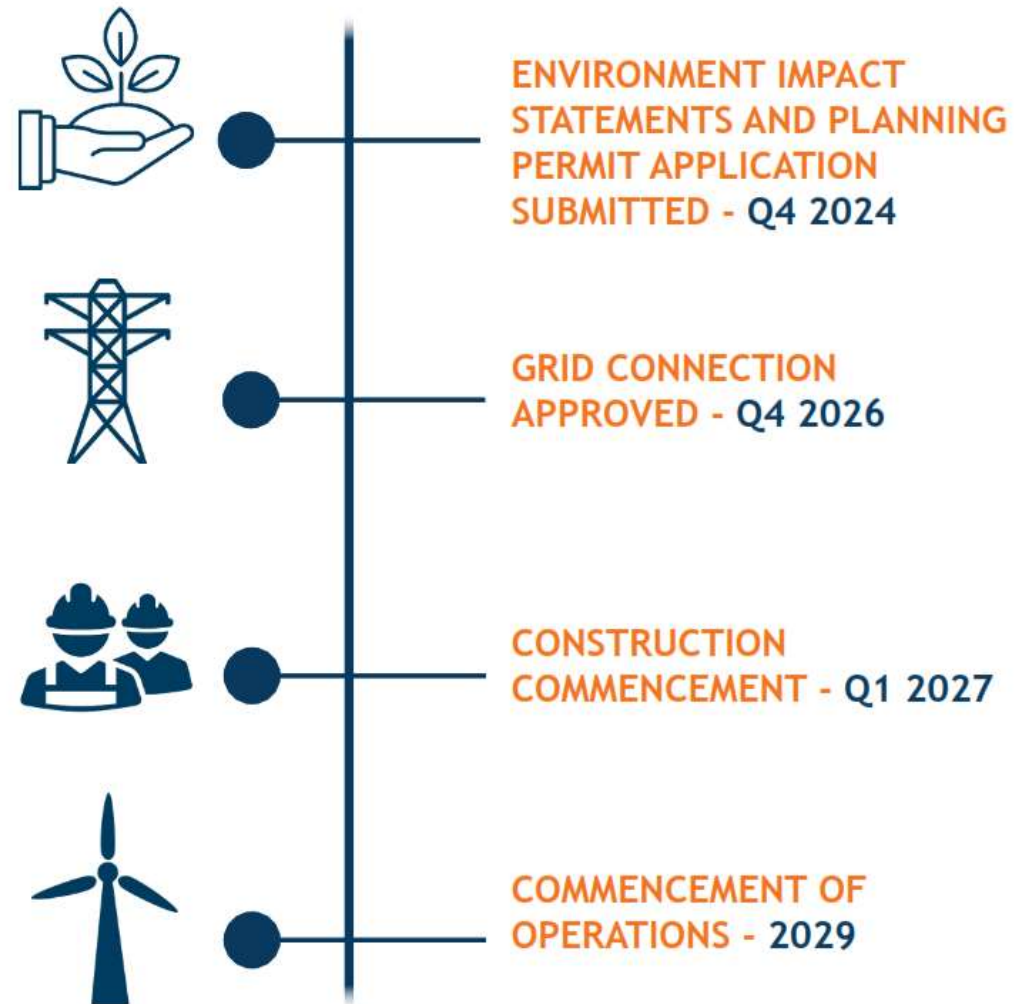


Since release of scoping report last year, RES has continued to refine the project in response to ongoing studies and stakeholder feedback:

- a reduction in the overall project size from 63 to 55 wind turbines
- a reduction in the maximum proposed height of wind turbines from 280m to 253.5m
- layout changes to protect ecological values and cultural heritage values
- revision of route to site for blades and large equipment and project traffic impacts along Burrendong Way
- introduction of a proposed Neighbour Shared Benefit Scheme

# Revised project layout

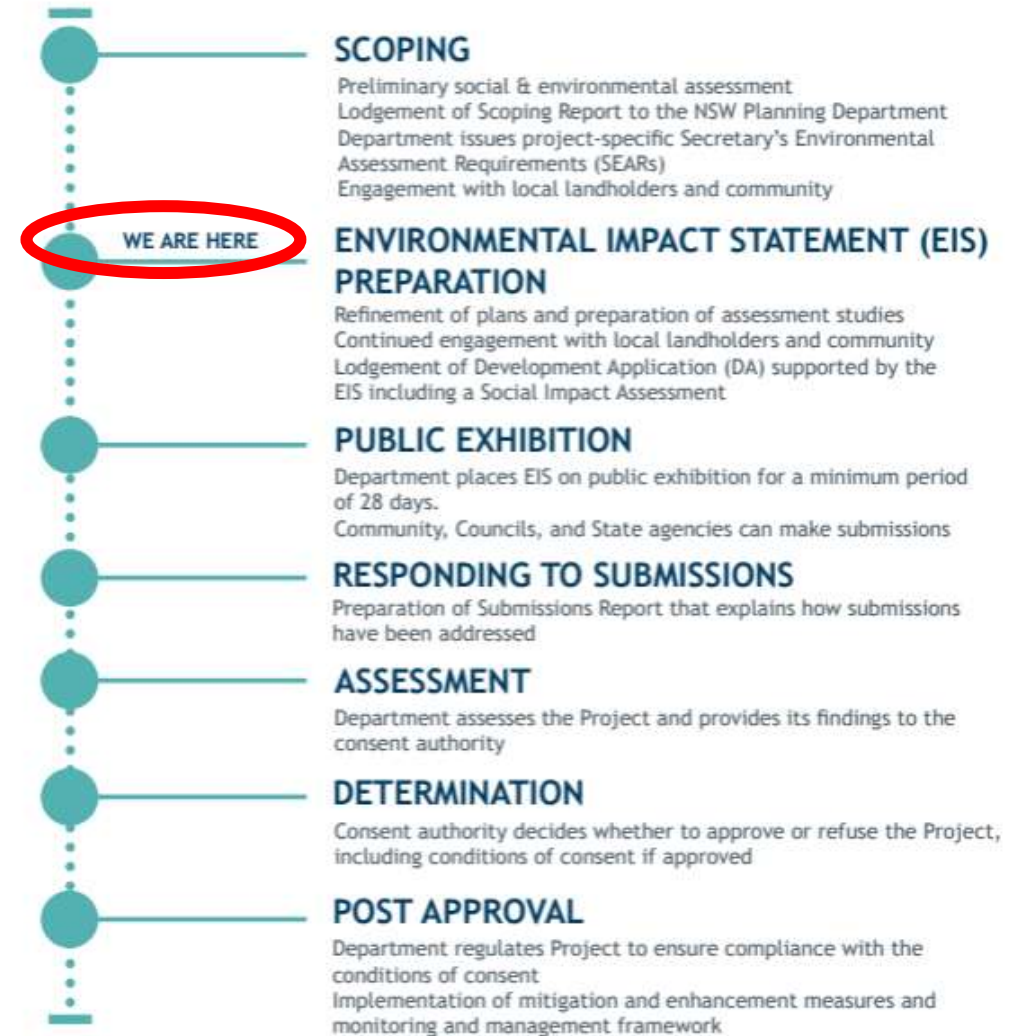






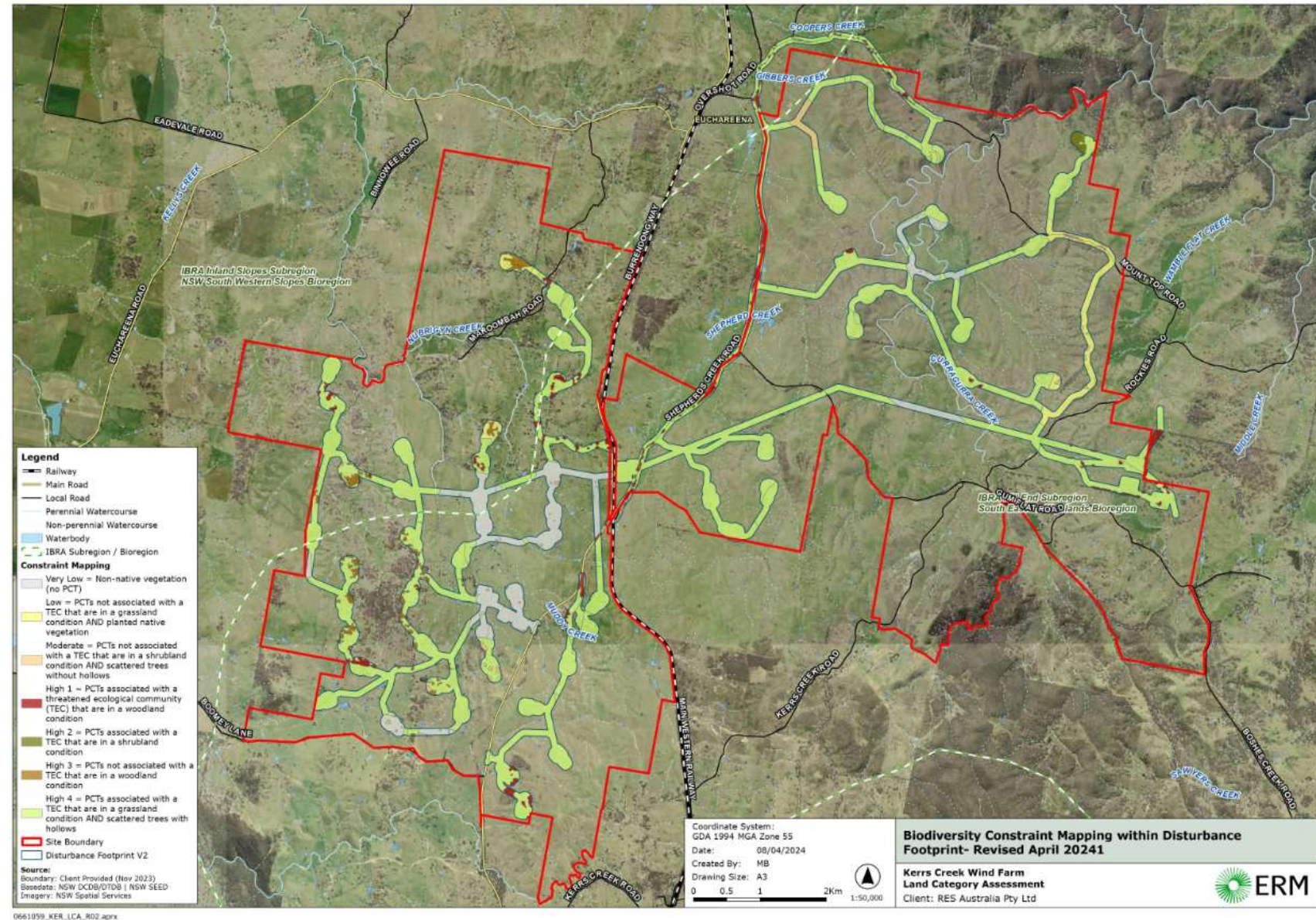
# Approval process

- › Scoping report submitted in September 2023
- › SEARs issued in October 2023
- › EPBC referral completed June 2024
- › EIS preparation underway
- › One-on-one engagement with visually impacted neighbours
- › Working to lodge planning submission in Q4 2024
- › NSW Government will undertake 28 day public exhibition



# Environmental values

- Design revisions informed by extensive flora and fauna survey effort:
  - Bird and bat utilisation surveys
  - Remote visual and audio recording and call playbacks
  - Threatened species habitat assessment
  - Species observation, spotlighting and transect surveys.
- Minimises impacts on remnant vegetation and focused disturbance on areas of non-native and cleared areas.

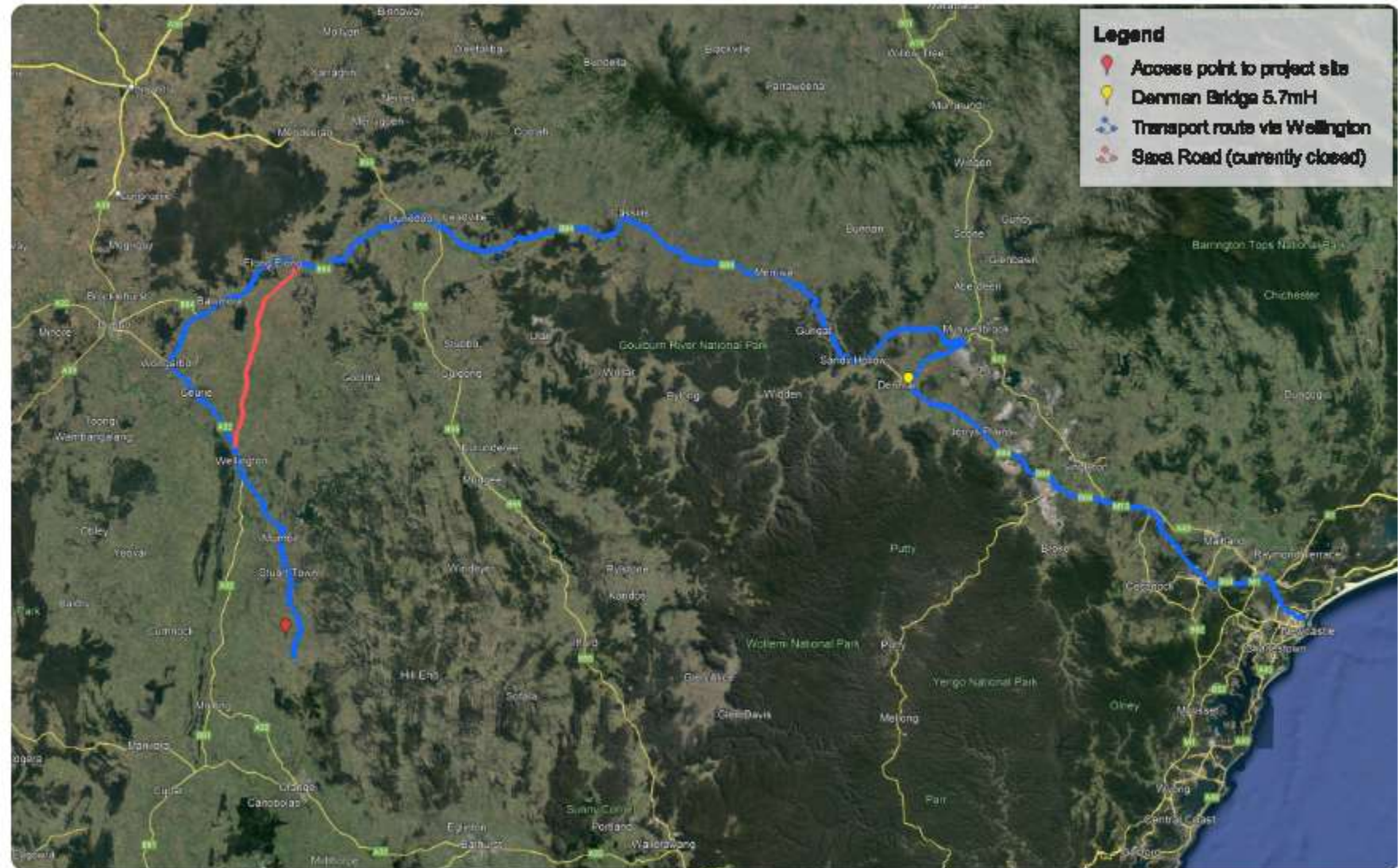


# Route to site

Wind turbine components for the Kerrs Creek Wind Farm will be transported to site from the Port of Newcastle.

Over-size, over-mass (OSOM) cargo will take the Golden Highway and Saxa Road to Wellington, travel through Wellington and then take Burrendong Way to site.

Modifications to some intersections will be required to accommodate the larger components, especially the blades. This transport route avoids Molong and the Molong Swimming Pool.



# Decommissioning

- Wind turbines are predominantly (80-90% by weight) made of valuable recyclable materials: steel, aluminium, copper, cast iron.
- Agreements with project landowners set out detailed responsibilities and the requirement for a **decommissioning bond**.
- **Decommissioning plan** will detail rights and responsibilities of parties during decommissioning, including any new project owner.
- Parts of the wind farm may remain post-decommissioning to serve a functional purpose for the landowner (sheds, fencing or access tracks).
- The most challenging component to recycle is the **blade**: composite material of fibre glass and carbon fibre.
- Significant work underway globally to create more end-of-life pathways.
- More information on decommissioning will be included in the Environmental Impact Statement.



## \$10M+ COMMUNITY BENEFIT SHARING

*over the life of the project shared across the Dubbo and Cabonne Council areas.*

## VOLUNTARY PLANNING AGREEMENT (VPA)

A VPA is a legal agreement with a local council where a project developer voluntarily agrees to make contributions to the community. RES has offered a VPA based on 1.5% of the Capital Investment Value (CIV) indexed annually for CPI. This equates to more than \$10 million. RES are currently working with both Dubbo and Cabonne Councils about how this funding will be shared between the two Council areas.

### Neighbour SBS Property Category



More than 130 close neighbours (within 5km of a final turbine location) will be eligible for an annual neighbour shared benefit payment, this includes the Kerrs Creek and Euchareena townships

- Ashley Robertson, Moir Landscape Architecture

# Landowner perspective

Susan Findlay Tickner

Landowner at Murra Warra Wind Farm VIC

- » Lived experience with developer
- » Property prices
- » Insurance
- » Community fund



res

# Q&As

POWER  
FOR  
GOOD





# Close & next steps

- Expect to lodge planning submission in Q4 2024, finalised layout
- EIS will be available via the NSW online planning portal
- RES will continue to update the community via email & website
- Sign up to receive email updates



# Thank you

---

**POWER  
FOR  
GOOD**

## CONTACT THE TEAM

 1800 118 737 to request a call back     [info@kerrscreek-renewableenergy.com](mailto:info@kerrscreek-renewableenergy.com)

 [kerrscreek-renewableenergy.com/contact-us](http://kerrscreek-renewableenergy.com/contact-us)