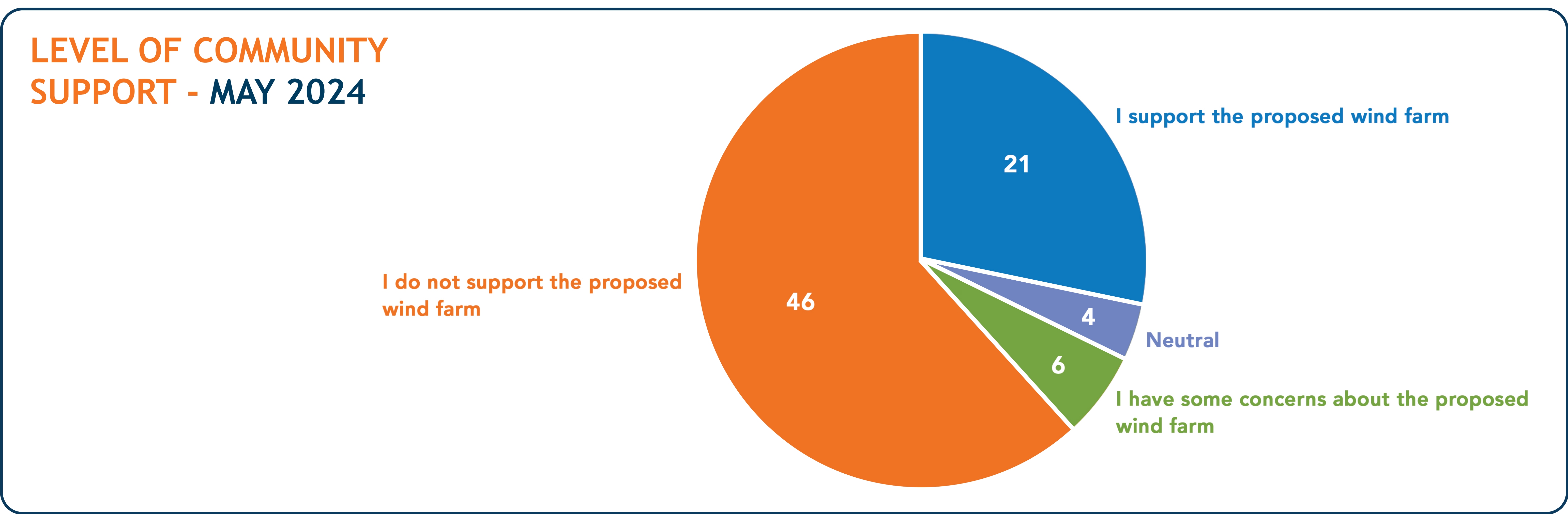
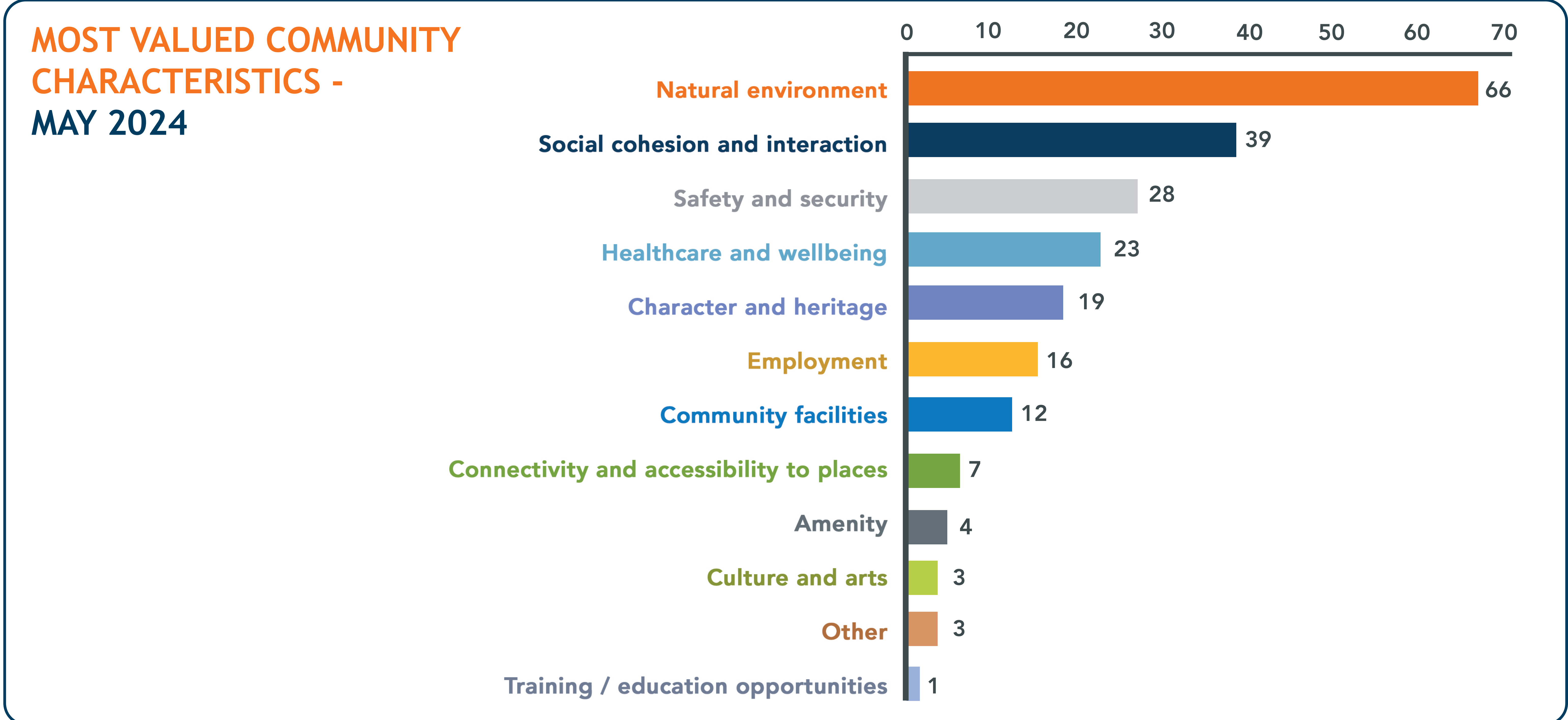


KERRS CREEK WIND FARM

- Community and business online surveys open for 8 weeks from 12 March to 5 May 2024
- Promoted via email, project newsletter mailout (34k newsletters distributed), project website
- 90 responses received: 77 from community, 13 from local businesses
- 36% of community responses from project neighbours (within 10km of the project site), 41% from community residents (more than 20km from the project site)
- Respondents covered all age brackets from 20-89 years.



ANONYMOUS VERBATIM COMMENTS FROM SURVEY RESPONDENTS, REPRESENTATIVE OF BOTH POSITIVE AND NEGATIVE IMPACTS:

“Employment opportunities, community benefits, extra facilities for kids to entertain themselves, enhance RFS and extra biosecurity for the community.”

“Devaluation of property value. Destruction of prime agricultural land.”

“Increased renewable energy is a positive for the whole country to reduce our environmental impacts, and having it located in our area should result in positive economic impacts as well through job opportunities and funds going towards the local community.”

“Impact on local visual amenity. Road pavement and access impacts.”